

1

2

3

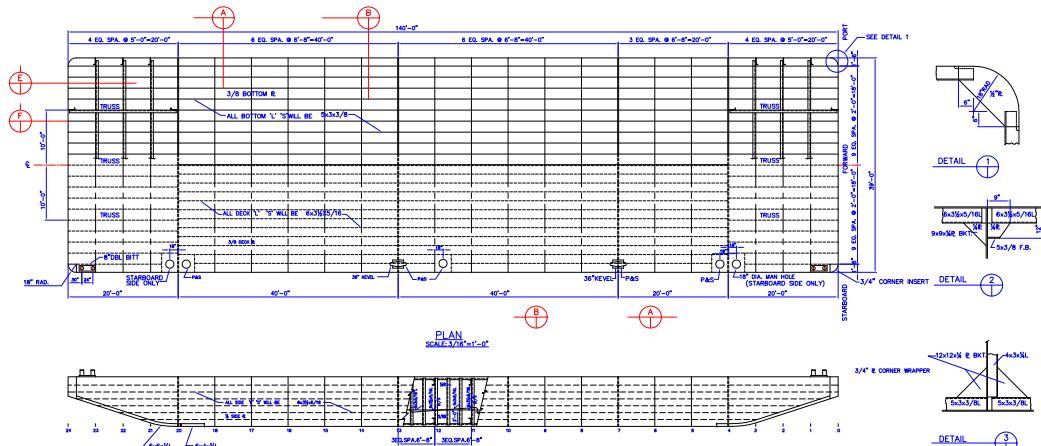
4

A

A

B

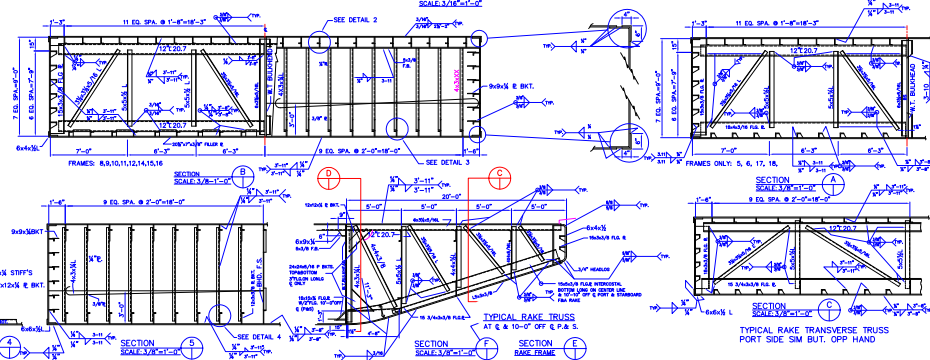
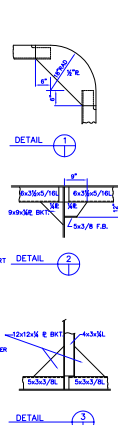
B



PLAN  
SCALE 3/32"=1'-0"



PROFILE  
SCALE 3/32"=1'-0"



- NOTES
1. ALL LAPPED PLATES TO BE WELDED CONT.
  2. ALL BUTT PLATES JOINTS TO BE WELDED CONT.
  3. EXTERIOR-SANDBLAST TO NEAR WHITE METAL ONE COAT THE DISKDY.
  4. INTERIOR-TO BE OILED WITH ONE(1) COAT OF TEXACO COMPONDUM 707
  5. BARGE NAME TO BE OUT LETTER FROM 1/2" PLATE 1/4" HIGH SPACING 8" WELDED TO SIDE OF RAKES ON TWO SIDES (DIAGONALLY OPPOSITE SPARK WELD) IN ROW RAKE BELOW MAINWAY ON BLAKEHEAD OF BARGE (SEE TIME OF BARGE).
  6. VESSEL TO BE CERTIFICATED BY U.S.C.G. FOR UNLIMITED OCEAN SERVICE
  7. VESSEL TO HAVE LOAD LINE TO BE ASSIGNED BY A.B.S. FOR UNLIMITED OCEAN SERVICE
  8. VESSEL TO BE CLASSED AS "AT BARGE"



Canal Barge Company, Inc.  
835 Union Street  
New Orleans, LA 70112  
Phone 504.581.2424  
[www.canalbarge.com](http://www.canalbarge.com)

140'x39'-0"x9'-0" DECK CARGO BARGE

BARNETT CONTRACTORS

STEEL PLACING PLAN

CBC 629, 630 & 631

LEGAL NOTICE: General arrangement and other drawings are provided for informational purposes only. Canal Barge Company, Inc. does not warrant the accuracy of any drawing of any barge. By accessing and/or downloading any barge drawing, user agrees to hold harmless Canal Barge Company, Inc. from any claim or loss that may arise from the use of those drawings or any errors or omissions therein.

1

2

3

4